

Coastal Cruising Companion

Newsletter # 3 – February 2013

www.coastalcruisingaustralia.com

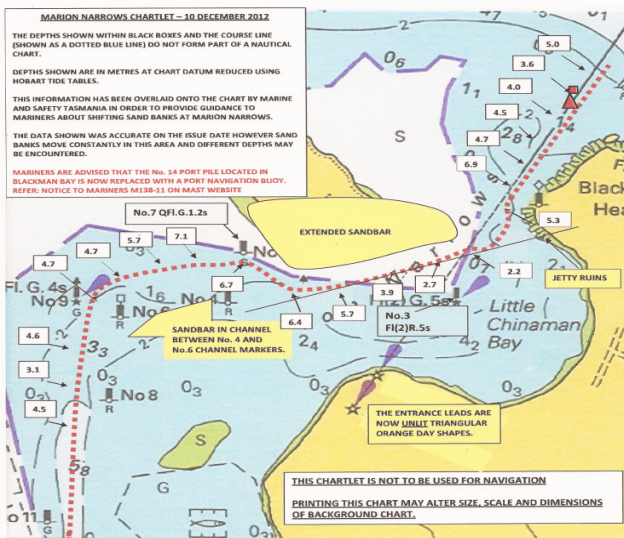


Hi folks,

Just in case you are cruising here at present, the Denison Canal is back in operation after the recent devastating bush fires, (details below).

If you are here for the Australian Wooden Boat Festival, don't forget to visit the Cruising Yacht Club of Tasmania booth. I will be there Saturday from 3pm and Sunday morning. Drop by to say hello! Also any www.skipr.net skippers around Sunday morning why not join other Skipr's at Harbour Lights Café on the waterfront, for a casual breakfast 'meet' from 8.am. *Marilyn*

DUNALLEY - Denison Canal



Thanks to the great effort by the Aurora workmen, the power is back on and the Canal is operating again. MAST have recently completed an assessment of the Canal transit (between Marion Bay and Norfolk Bay) and have produced a new chartlet for the area, it should be read in conjunction with AUS169 map. MAST also warns that depths in the area are continually changing. Mariners are advised not to attempt entering Blackman Bay through the Narrows in heavy north-easterly conditions, to navigate only at high tide and only in daylight hours. The Canal can be opened between 8.00am and 5.00pm by calling 03 6253 5113 or VHF Ch16 Callsign: Denison Canal or 27MHz Radio: 27.880MHz. www.mast.tas.gov.au has the chartlet and also has advice on tidal streams in the area plus lots of other good information about cruising in Tasmanian waters.

If you would like to read about the experience of crossing Bass Strait, why not check out 'Sea'n Strait - Crossing Bass Strait on Ocean Child', my last adventure. Preview on <http://au.blurb.com/b/4042727-sea-n-strait> Please contact me if you would like more information.

Marilyn – Tel: 0419 881 694 or email: info@coastalcruisingaustralia.com